

# Bolon Fact Sheet

Artisan Collection

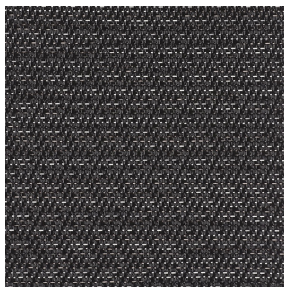
**BOLON**

# Artisan Collection

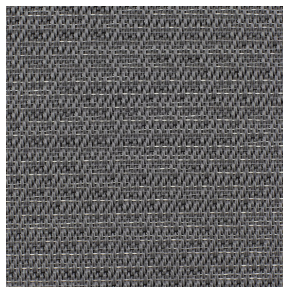
## Bolon

Bolon is a textured woven flooring, consisting a profile section PVC warp (vertical weave), with a PVC encased polyester weft (horizontal weave) fixed to a plasticised PVC backing with an interlayer of fibreglass. The Artisan collection includes 17 articles and is available in roll, tile and plank form.

## Artisan Collection



Noir



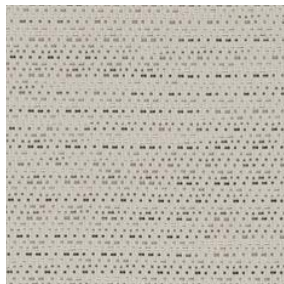
Slate



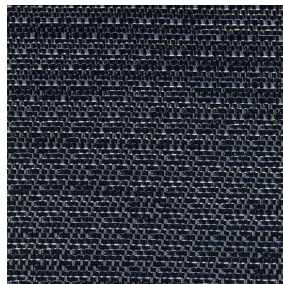
Concrete



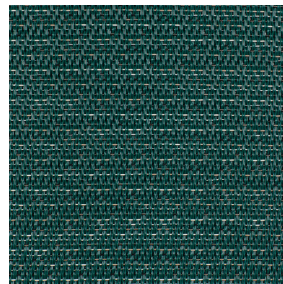
Ivory



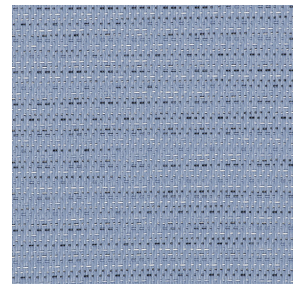
Chalky



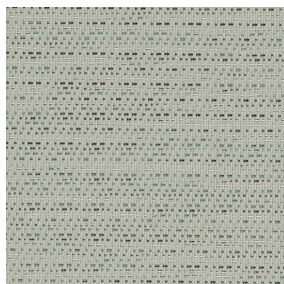
Ink



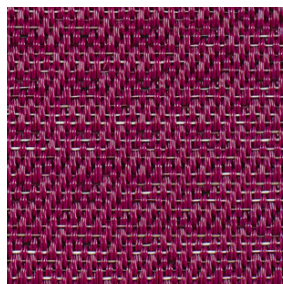
Jade



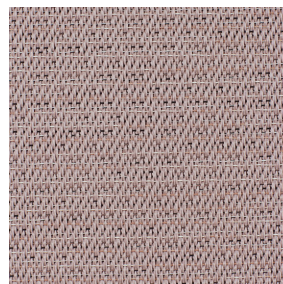
Water



Fresh



Fuchsia



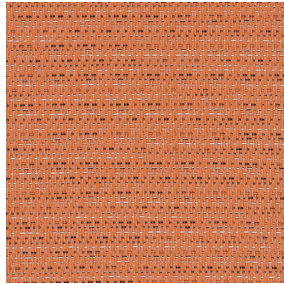
Quartz



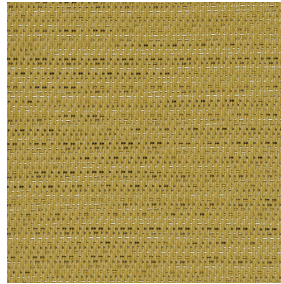
Ecrú



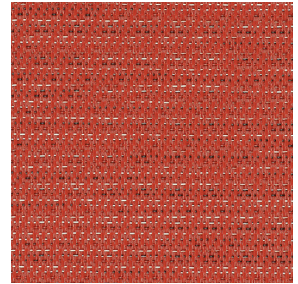
Wild



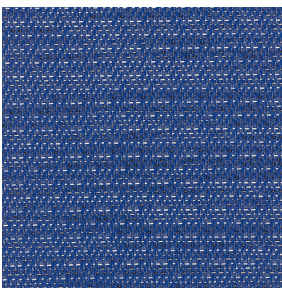
Play



Spring



Love



True

## Design

The Artisan Collection combines the craftsmanship and creativity of yesteryear with the possibilities achievable by modern technology. The result is a collection with a new thread, high textile feeling, high wear resistance class and a unique look.

## Fast Facts

- Roll                      Roll size = 25 m x 2 m at 2.5 mm thick.  
                                  Weight of rolls = 2.9 kg/m<sup>2</sup>.
- Tile                        Standard tile size = 500 x 500 mm at 3 mm thick.  
                                  Weight of tiles = 3.9 kg/m<sup>2</sup>.  
                                  Tiles sold by the box = 20 tiles/5 m<sup>2</sup>.
- Studio                    Available in Bolon Studio shapes.  
                                  Visit [bolon.theandrewsgroup.com.au](http://bolon.theandrewsgroup.com.au) or contact The Andrews Group for details.

# Artisan Collection

## Technical Specifications

Article Name	Roll	Tile	Plank	Wear Class	Wear Rating	Warranty Years	W.O.R. Slip	Pend Test Wet Slip	Sound Reduction	Sound Absorption	Fire Rating NCC C1.10a
Artisan Noir	✓	✓	✗	33	EHD	15	R10	P3	11dB	5%	Pass
Slate	✓	✓	✗	33	EHD	15	R10	P3	11dB	5%	Pass
Concrete	✓	✓	✗	33	EHD	15	R10	P3	11dB	5%	Pass
Ivory	✓	✗	✗	33	EHD	15	R10	P3	11dB	5%	Pass
Chalky	✓	✓	✗	33	EHD	15	R10	P3	11dB	5%	Pass
Ink	✓	✓	✗	33	EHD	15	R10	P3	11dB	5%	Pass
Jade	✓	✓	✗	33	EHD	15	R10	P3	11dB	5%	Pass
Water	✓	✓	✗	33	EHD	15	R10	P3	11dB	5%	Pass
Fresh	✓	✓	✗	33	EHD	15	R10	P3	11dB	5%	Pass
Fuchsia	✓	✓	✗	33	EHD	15	R10	P3	11dB	5%	Pass
Quartz	✓	✓	✗	33	EHD	15	R10	P3	11dB	5%	Pass
Ecru	✓	✓	✗	33	EHD	15	R10	P3	11dB	5%	Pass
Wild	✓	✓	✗	33	EHD	15	R10	P3	11dB	5%	Pass
Play	✓	✓	✗	33	EHD	15	R10	P3	11dB	5%	Pass
Spring	✓	✓	✗	33	EHD	15	R10	P3	11dB	5%	Pass
Love	✓	✓	✗	33	EHD	15	R10	P3	11dB	5%	Pass
True	✓	✓	✗	33	EHD	15	R10	P3	11dB	5%	Pass

- Wear Rating** Classified 33 under international standard EN685 rating, the Artisan Collection can be used in all areas of commercial and residential applications. Please contact The Andrews Group for specific recommendations on area and colour selection.
- Warranty** The Artisan Collection is warranted for 15 years in areas defined as fit for purpose. The terms and conditions of this warranty are available on request.
- Fire Rating** The Artisan Collection has a Critical Radiant Flux (CRF) rating of 6.7 kW/m<sup>2</sup>, and a smoke developed rating of 205 %mins, as tested to ISO9239.1. This allows the product to be installed in any areas of a commercial building under the requirements of the National Construction Code (NCC).

# Artisan Collection

## Technical Specifications

- Slip Rating                      The Artisan Collection is rated R10 under the Wet Oil Ramp test as defined in S4586. The Artisan Collection is rated P3 under the Wet Pendulum Test as defined in AS4586 (2013). These ratings indicate a reduced risk of slip with this product.
- Sound Rating                    The Artisan Collection reduces impact sound by 11 decibels when adhered directly to a concrete slab. The Artisan Collection reduces airborne sound by 5% when adhered to a concrete slab. These measurements are defined by ISO717.1/2, and mean that the product contributes positively to sound insulation in commercial and residential buildings.
- Installation                      Please refer to Bolon Installation Guidelines or contact the Customer Service Team at The Andrews Group  
+61 (03) 9827 1311 | [bolon@theandrewsgroup.com.au](mailto:bolon@theandrewsgroup.com.au)
- Maintenance                    Please refer to Bolon Maintenance Guidelines or contact the Customer Service Team at The Andrews Group  
+61 (03) 9827 1311 | [bolon@theandrewsgroup.com.au](mailto:bolon@theandrewsgroup.com.au)