

# Bolon Fact Sheet

Botanic Collection

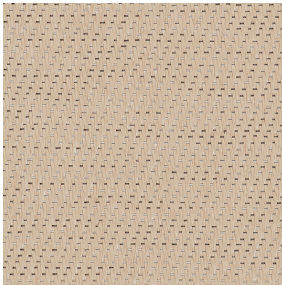
**BOLON**

# Botanic Collection

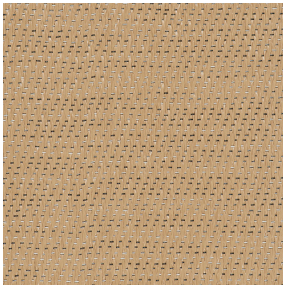
## Bolon

Bolon is a textured woven flooring, consisting a profile section PVC warp (vertical weave), with a PVC encased polyester weft (horizontal weave) fixed to a plasticised PVC backing with an interlayer of fibreglass. The Botanic collection includes 12 articles and is available in roll and tile form.

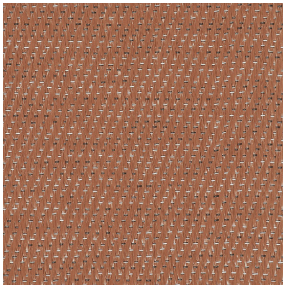
## Botanic Collection



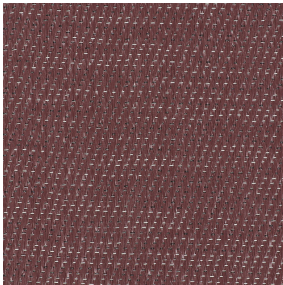
Blanche



Honey



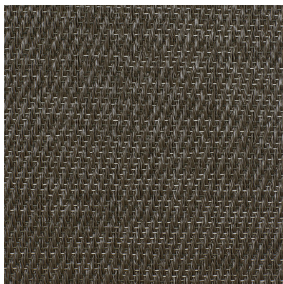
Canyon



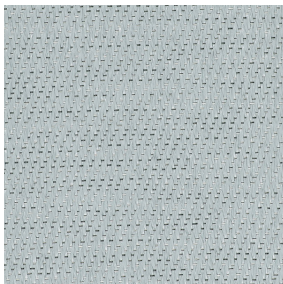
Chestnut



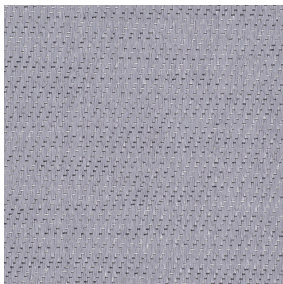
Cilia



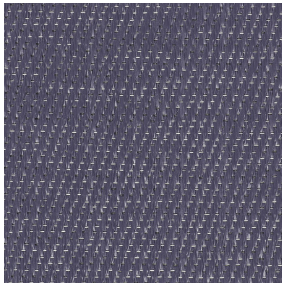
Tilia



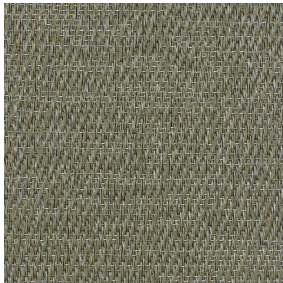
Spear mint



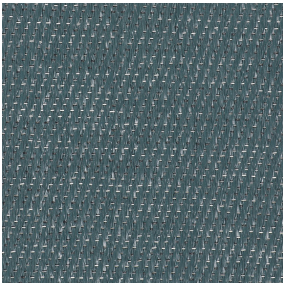
Rain



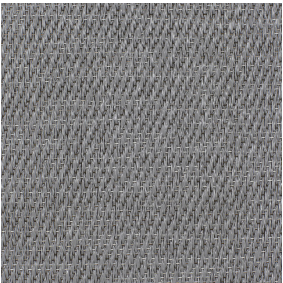
Vintage



Sage



Library



Osier

# Botanic Collection

## Design

The Botanic Collection is inspired by the wealth of detail in nature. With a two-coloured weft thread, the richly coloured collection provides a varied range of muted earth tones and bright accents.

## Fast Facts

- Roll                      Roll size = 25 m x 2 m at 2.5 mm thick.  
Weight of rolls = 2.9 kg/m<sup>2</sup>.
- Tile                      Standard tile size = 500 x 500 mm at 3 mm thick.  
Weight of tiles = 3.9 kg/m<sup>2</sup>.  
Tiles sold by the box = 20 tiles/5 m<sup>2</sup>.
- Studio                   Available in Bolon Studio shapes.  
Visit [bolon.theandrewsgroup.com.au](http://bolon.theandrewsgroup.com.au) or contact The Andrews Group for details.

# Botanic Collection

## Technical Specifications

Article Name		Roll	Tile	Wear Class		Wear Rating	Warranty Years	W.O.R. Slip	Pend Test Wet Slip	Sound Reduction	Sound Absorption	Fire Rating NCC C1.10a
				Roll	Tile							
Botanic	Blanche	✓	✓	32	32	HD	10	R10	P3	12dB	5%	Pass
	Honey	✓	✓	32	32	HD	10	R10	P3	12dB	5%	Pass
	Canyon	✓	✓	32	32	HD	10	R10	P3	12dB	5%	Pass
	Chestnut	✓	✓	32	32	HD	10	R10	P3	12dB	5%	Pass
	Cilia	✓	✓	32	32	HD	10	R10	P3	12dB	5%	Pass
	Osier	✓	✓	32	32	HD	10	R10	P3	12dB	5%	Pass
	Tilia	✓	✓	32	32	HD	10	R10	P3	12dB	5%	Pass
	Spearmint	✓	✓	32	32	HD	10	R10	P3	12dB	5%	Pass
	Rain	✓	✓	32	32	HD	10	R10	P3	12dB	5%	Pass
	Vintage	✓	✓	32	32	HD	10	R10	P3	12dB	5%	Pass
	Sage	✓	✓	32	32	HD	10	R10	P3	12dB	5%	Pass
	Library	✓	✓	32	32	HD	10	R10	P3	12dB	5%	Pass

- Wear Rating

Classified 32 under international standard EN685 rating, the Botanic Collection can be used in all areas of commercial and residential applications. Please contact The Andrews Group for specific recommendations on area and colour selection.
- Warranty

The Botanic Collection is warranted for 10 years in areas defined as fit for purpose. The terms and conditions of this warranty are available on request.
- Fire Rating

The Botanic Collection has a Critical Radiant Flux (CRF) rating of 7.4 kW/m<sup>2</sup>, and a smoke developed rating of 189 %mins, as tested to ISO9239.1. This allows the product to be installed in any areas of a commercial building under the requirements of the National Construction Code (NCC).

# Botanic Collection

## Technical Specifications

- Slip Rating

The Botanic Collection is rated R10 under the Wet Oil Ramp test as defined in AS4586. The Botanic Collection is rated P3 under the Wet Pendulum Test as defined in AS4586 (2013). These ratings indicate a reduced risk of slip with this product.
- Sound Rating

The Botanic Collection reduces impact sound by 12 decibels when adhered directly to a concrete slab. The Botanic Collection reduces airborne sound by 5% when adhered to a concrete slab.
- Installation

Please refer to Bolon Installation Guidelines or contact the Customer Service Team at The Andrews Group  
+61 (03) 9827 1311 | [bolon@theandrewsgroup.com.au](mailto:bolon@theandrewsgroup.com.au)
- Maintenance

Please refer to Bolon Maintenance Guidelines or contact the Customer Service Team at The Andrews Group  
+61 (03) 9827 1311 | [bolon@theandrewsgroup.com.au](mailto:bolon@theandrewsgroup.com.au)