

# Bolon Fact Sheet

Emerge Collection

**BOLON**

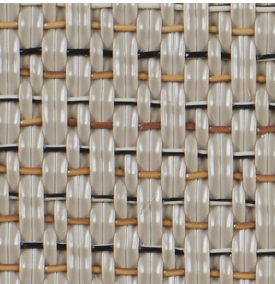
# Emerge Collection

**Bolon**

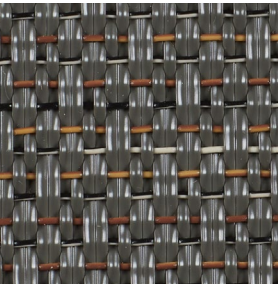
Bolon is a high-performance flooring that is durable, easy to clean, hygienic and sustainable. With a broad palette of shapes, colours and expressions, the design possibilities are endless.

The Emerge collection includes 6 articles and is available in roll, tile and with Acoustic Backing.

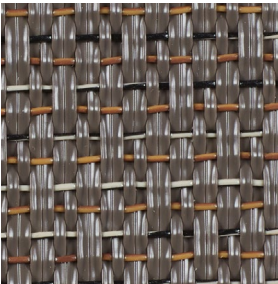
**Emerge Collection**



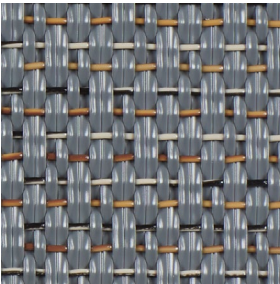
Arise



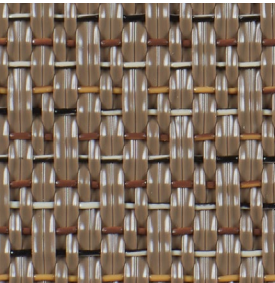
Billow



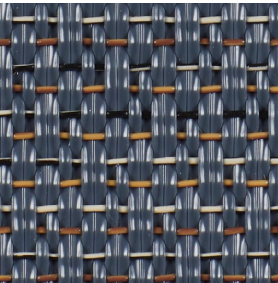
Drift



Ripple



Sway



Swirl

# Emerge Collection

**Design**

We've gone back to the loom and created something that comes alive and lasts. We've found that perfect balance giving six new neutral colours real character and structure. Threads in both warm and cold shades woven together, and layers of subtle colouring make room for inevitable changes in light and shadow.

Developed to complement the materials most used by architects, it is precisely these colours with their evolving texture, that offer something that is anything but basic.

**Fast Facts**

- Roll                      Roll size = 25 m x 2 m at 2.5 mm thick.  
Weight of rolls = 2.9 kg/m<sup>2</sup>.
- Tile                      Standard tile size = 500 x 500 mm at 3 mm thick.  
Weight of tiles = 3.9 kg/m<sup>2</sup>.  
Tiles sold by the box = 20 tiles/5 m<sup>2</sup>.  
  
Also available with ISI comfort backing.  
Standard tile size = 500 x 500 mm at 5 mm thick.  
Weight of tiles= 4.1 kg/m<sup>2</sup>

# Emerge Collection

Technical Specifications

Article Name		Roll	Tile	Wear Class		Wear Rating	Warranty Years	W.O.R. Slip	Pend Test Wet Slip	Sound Reduction	Sound Absorption	Fire Rating NCC C1.10a
				Roll	Tile							
Elements	Wool	✓	✓	33	33	EHD	15	R10	P2	11dB	5%	Pass
	Flint	✓	✓	33	33	EHD	15	R10	P2	11dB	5%	Pass
	Marble	✓	✓	33	33	EHD	15	R10	P2	11dB	5%	Pass
	Walnut	✓	✓	33	33	EHD	15	R10	P2	11dB	5%	Pass
	Silk	✓	✓	33	33	EHD	15	R10	P2	11dB	5%	Pass
	Birch	✓	✓	33	33	EHD	15	R10	P2	11dB	5%	Pass
	Linen	✓	✓	33	33	EHD	15	R10	P2	11dB	5%	Pass
	Oak	✓	✓	33	33	EHD	15	R10	P2	11dB	5%	Pass
	Ash	✓	✓	33	33	EHD	15	R10	P2	11dB	5%	Pass
	Cork	✓	✓	33	33	EHD	15	R10	P2	11dB	5%	Pass

- Wear Rating

Classified 33 under international standard EN685 rating, the Emerge Collection can be used in all areas of commercial and residential applications. Please contact The Andrews Group for specific recommendations on area and colour selection.
- Warranty

The Emerge Collection is warranted for 15 years in areas defined as fit for purpose. The terms and conditions of this warranty are available on request.
- Fire Rating

The Emerge Collection has a Critical Radiant Flux (CRF) rating of 6.7 kW/m², and a smoke developed rating of 205 %mins, as tested to ISO9239.1. This allows the product to be installed in any areas of a commercial building under the requirements of the National Construction Code (NCC).

# Emerge Collection

Technical Specifications

- Slip Rating

The Emerge Collection is rated R10 under the Wet Oil Ramp test as defined in AS4586. The Emerge Collection is rated P2 under the Wet Pendulum Test as defined in AS4586 (2013). These ratings indicate a reduced risk of slip with this product.
- Sound rating

Acoustic Backing option further improves the impact sound absorption to 21dB, and the airborne sound transmission coefficient (NRC) to 0.15. The measurements are defined by ISO717.1/2, and mean that the product contributes positively to sound insulation in commercial and residential buildings.
- Installation

Please refer to Bolon Installation Guidelines or contact the Customer Service Team at The Andrews Group  
+61 (03) 9827 1311 | [bolon@theandrewsgroup.com.au](mailto:bolon@theandrewsgroup.com.au)
- Maintenance

Please refer to Bolon Maintenance Guidelines or contact the Customer Service Team at The Andrews Group  
+61 (03) 9827 1311 | [bolon@theandrewsgroup.com.au](mailto:bolon@theandrewsgroup.com.au)