



BOLON

Bolon Resilient Woven Flooring | Elements Collection Fact Sheet

BOLON FACT SHEET - ELEMENTS

BOLON

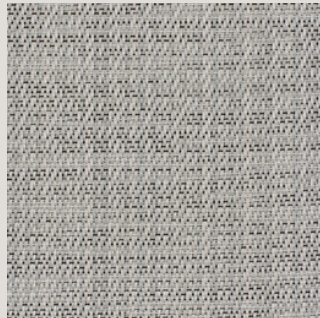
Bolon is a high-performance resilient woven flooring that is durable, easy to clean, hygienic and sustainable. With a broad palette of shapes, colours and expressions, the design possibilities are endless.

Setting a new benchmark in sustainable flooring, all Bolon collections consist of 68% recycled content, are carbon neutral, and have a transformative vision for circularity.

The Elements collection includes 12 articles and is available in roll, tile and Bolon Studio form.



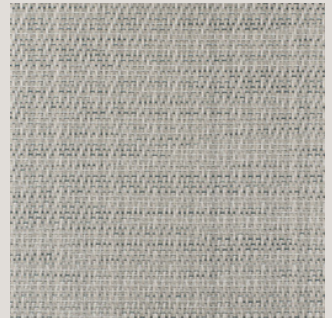
Ash



Birch



Cork



Linen



Marble



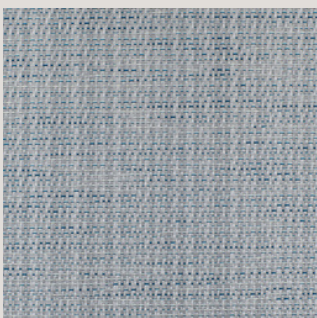
Tweed



Ore



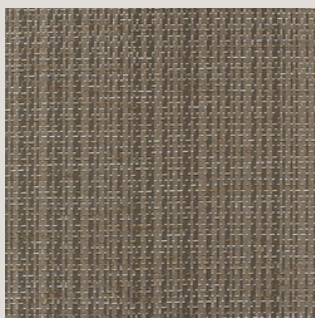
Wool



Flint



Silk



Reed



Kelp

BOLON FACT SHEET - ELEMENTS

DESIGN

Creating balance between people, objects and their surroundings, Elements is a discreet collection, characterised by warm tonality, natural balance and sustainable values.

FAST FACTS

- Roll
Roll size = 25 m x 2 m at 2.5 mm thick
Weight of rolls = 2.9 kg/m²
- Tile
Standard tile size = 500 x 500 mm at 3 mm thick
Weight of tiles = 3.9 kg/m²
Tiles sold by the box = 20 tiles/5 m²
- Studio
Available in Bolon Studio shapes.
Visit bolon.theandrewsgroup.com.au or contact The Andrews Group for details.

SUSTAINABILITY

Bolon sets a new benchmark in sustainable flooring with 68% recycled content, carbon neutrality, and a transformative vision for circularity. Combined with a long product lifecycle, and being awarded the most stringent environmental certifications, Bolon is the industry leader and pioneer in sustainable innovation.



0%

Climate impact

with no carbon off-sets

68%

Recycled content

in every square metre

BOLON

BOLON FACT SHEET - ELEMENTS

TECHNICAL SPECIFICATIONS

Article	Roll	Tile	Wear Class	Wear Rating	Warranty Years	W.O.R Slip	Pend Test Wet Slip	Sound Reduction	Sound Absorption	Fire Rating NCC C1.10a
Wool	✓	✓	33	EHD	15	R10	P3	11dB	5%	Pass
Flint	✓	✓	33	EHD	15	R10	P3	11dB	5%	Pass
Marble	✓	✓	33	EHD	15	R10	P3	11dB	5%	Pass
Ore	✓	✓	33	EHD	15	R10	P3	11dB	5%	Pass
Silk	✓	✓	33	EHD	15	R10	P3	11dB	5%	Pass
Birch	✓	✓	33	EHD	15	R10	P3	11dB	5%	Pass
Linen	✓	✓	33	EHD	15	R10	P3	11dB	5%	Pass
Reed	✓	✓	33	EHD	15	R10	P3	11dB	5%	Pass
Ash	✓	✓	33	EHD	15	R10	P3	11dB	5%	Pass
Cork	✓	✓	33	EHD	15	R10	P3	11dB	5%	Pass
Kelp	✓	✓	33	EHD	15	R10	P3	11dB	5%	Pass
Tweed	✓	✓	33	EHD	15	R10	P3	11dB	5%	Pass

- **Wear Rating** Classified 33 under international standard EN685 rating, the Elements Collection can be used in all areas of commercial and residential applications. Please contact The Andrews Group for specific recommendations on area and colour.
- **Warranty** The Elements Collection is warranted for 15 years in areas defined as fit for purpose. The terms and conditions of this warranty are available on request.
- **Fire Rating** The Elements Collection has a Critical Radiant Flux (CRF) rating of 6.7 kW/m², and a smoke developed rating of 205 %mins, as tested to ISO9239.1. This allows the product to be installed in any areas of a commercial building under the requirements of the National Construction Code (NCC).

Bolon floorcoverings have also been fire tested to AS 5637.1 - 2015 for use on wall applications. They achieve a Group 3 rating under this standard. Please contact the Customer Service Team at The Andrews Group for further details.

+61 (03) 9827 1311 | bolon@theandrewsgroup.com.au

TECHNICAL SPECIFICATIONS

- Slip Rating The Elements Collection is rated R10 under the Wet Oil Ramp test as defined in AS4586. The Elements Collection is rated P3 under the Wet Pendulum Test as defined in S4586. These ratings indicate a reduced risk of slip with this product.

- Sound Rating The Elements Collection reduces impact sound by 11 decibels when adhered directly to a concrete slab. The Elements Collection reduces airborne sound by 5% when adhered to a concrete slab. These measurements are defined by ISO717.1/2, and mean that the product contributes positively to sound insulation in commercial and residential buildings.

- Installation Please refer to Bolon Installation Guidelines or contact the Customer Service Team at The Andrews Group:

+61 (03) 9827 1311 | bolon@theandrewsgroup.com.au

- Maintenance Please refer to Bolon Maintenance Guidelines or contact the Customer Service Team at The Andrews Group:

+61 (03) 9827 1311 | bolon@theandrewsgroup.com.au