

# Bolon Studio™ Triangles

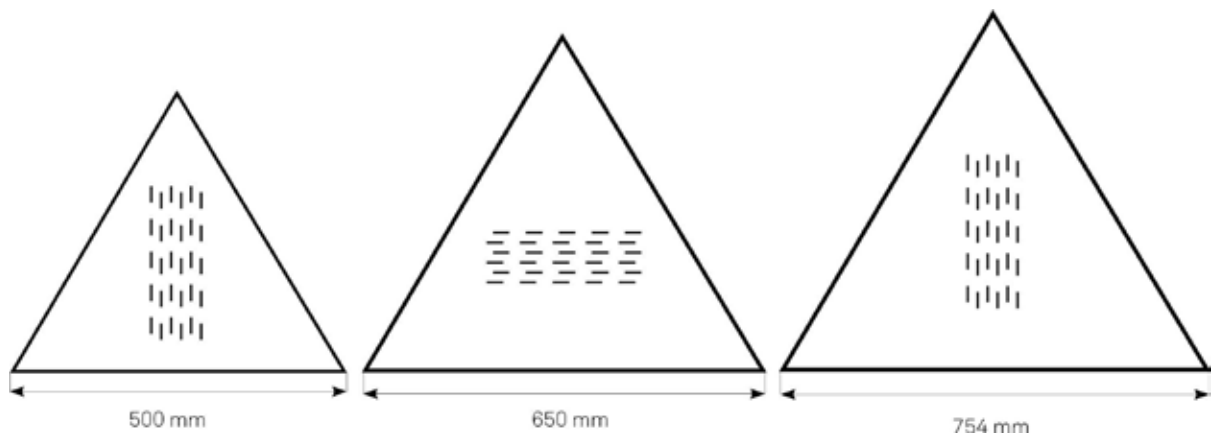
Installation Guidelines

**BOLON**

# Installation Guidelines

## Bolon

Bolon is woven vinyl product backed with glass fibre-reinforced PVC. Since the material is a woven product, its structure is naturally irregular. BOLON Studio™ shapes are cut from roll material and should be installed with a permanent adhesive. They are not suitable for loose lay installation with pressure sensitive adhesive or wet rooms. Suitable adhesives include acrylic, or PU, if installation is subject to conditions which may cause product to move (e.g. strong heat/light).



The dotted lines show the direction of the weft yarn. The weft, is the thinner yarn, which is drawn through the warp, the thicker yarn. Depending on the direction of the weft, a different effect can be seen.

# Installation Guidelines

## Design

Bolon Studio™ Triangle comes in three different sizes and is a strict geometric, yet playful flooring shape that offers architects and designers endless possibilities. Simply turn Triangles cut in the same collection or mix collections to create a myriad of geometrical patterns and colourful surfaces.

## Fast Facts

- Material      Made of woven vinyl with roll backing, for use of permanent adhesive.
- Triangle 500   Sold by the box = 44 pieces/4.76 m<sup>2</sup>.
- Triangle 650   Sold by the box = 25 pieces/4.58 m<sup>2</sup>.
- Triangle 754   Sold by the box = 21 pieces/5.17 m<sup>2</sup>.

# Installation Guidelines

## Preparation

The general sub-floor and environmental requirements for the installation of Bolon are as stated in AS1884 - Floor coverings - Resilient sheet and tiles - Laying and maintenance practices.

- The sub-floor must be clean, dry and free from cracks.
- Any adhesion-impairing spots (paint, oil, etc.), dust and concrete curing agents should be removed. Asphalt, oil spills, impregnating agents, solvent-based paints and felt pen markings can cause discolouration of the material. Please ensure these are removed mechanically removed prior to installation.
- Relative humidity of the concrete substrate should not exceed 75% when measured using the insitu probe test according to AS 1884: 2012.
- The sub-floor should be tested prior to installation. If the moisture content level cannot be achieved naturally, an appropriate moisture barrier for the sub-floor will be necessary. Bolon will also accept a moisture level of 5.5% or less when measured by electrical resistance meter.
- Use pencil/chalk for any markings. Before installation, material, adhesive and sub-floor must be allowed to adjust to room temperature (at least +18°C) for a minimum of 24 hours.

# Installation Guidelines

## Installation

- Ensure the tiles have adjusted to room temperature before installation and boxes of shapes are on a level surface. Acclimatisation can take several days for complete pallets.
- It is important to sort the boxes according to weave direction so that the shapes can be installed using roughly equal numbers of shapes with each weave direction. See attached diagrams for more information.
- Please refer to floor plans for specific design/layout specification.

Bolon Studio™ shapes can be installed using traditional installation methods for modular flooring tiles. Please note that there is no requirement for cold welding this type of installation, as there is for straight roll laying. There is similarly no requirement to overlap and double cut the shapes, they simply butt together.

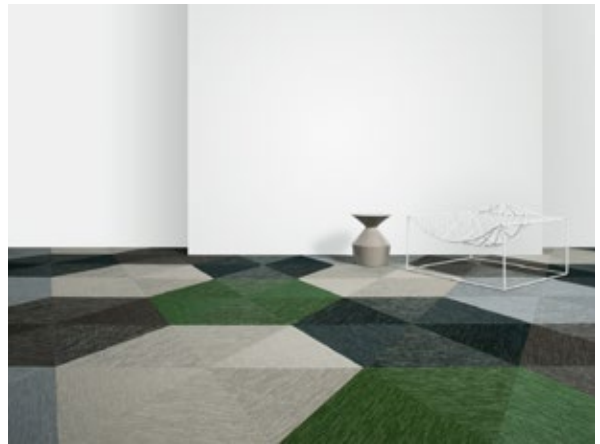
- It is usual to begin installation from the centre of the room, but any set out point can be used. In corridors and small rooms it may be simpler to work from one side to the other and use the centre line as a guide mark..
- The centre line can be drawn out as follows: Draw a line from the centre between two of the walls. Then draw the second line to form a cross with the other line. To achieve a 90 degrees right angle, the 3:4:5 method can be used. With the triangle shape, it may be more useful to strike a diagonal line as the set out line.
- Begin laying tiles at the centre point. Work outwards from the first tile, creating a pyramid. Continue in this way until the first quarter of the floor is complete. Be careful to follow the guidelines and ensure that the tiles fit closely together. If the first shapes do not follow the guidelines, this will affect the whole installation. Only spread adhesive over an area of a size that can be covered with tiles while the adhesive retains the right consistency. Please note that many of the floor designs achieved with Bolon Studio™ involve a random use of the shapes in different colours and weaves. Bear in mind when installing that roughly equal numbers of shapes of each colour and weave should be used over any one given area, so as to ensure there is no imbalance in shape availability as the installation progresses.
- As it takes time to cut shapes at the perimeter, it may be best to spread adhesive on the area where complete tiles will be laid first. Once this is done, cut all edge tiles and lay them at the same time.
- After installation, run over all joints lengthways and crossways with a standard vinyl roller.

# Installation Guidelines

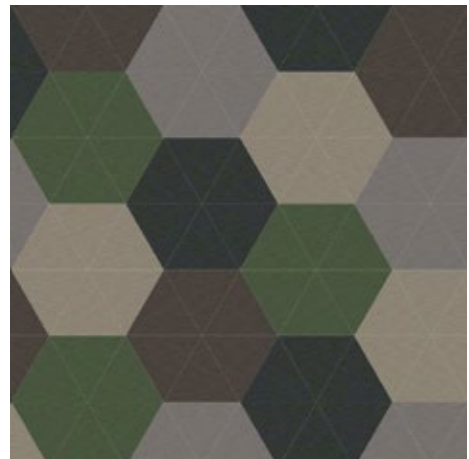
Design your own flooring using the [Bolon Tile Design Tool](#) or visit our [website](#) for more inspiration.



Bolon Now Champagne, Artisan Ivory, Silence Sense and BKB Sisal Plain Black



Bolon Botanic Osier, Botanic Cilia, Botanic Tilia, Botanic Picea and Botanic Ivy



# Installation Guidelines

## General Advice

- **Stairs** Bolon Studio™ is not generally recommended for stair applications, but if the material is being installed on steps, stair nosings must be used, installed with a contact adhesive.
- **Non Concrete Substrate** Bolon can be installed over any smooth, level surface, including timber, metal, and access floor, and in any plane from horizontal to vertical. For specific guidelines on your particular application, please contact Customer Service Team at The Andrews Group  
+61 (03) 9827 1311 | [bolon@theandrewsgroup.com.au](mailto:bolon@theandrewsgroup.com.au)
- **Underfloor Heating** For areas with underfloor heating, the temperature at the surface should not exceed 29 °C. Any underfloor heating systems should be commissioned at least a week prior to flooring installation, and turned off for that time, and for a week following installation. For further information, please contact Customer Service Team at The Andrews Group  
+61 (03) 9827 1311 | [bolon@theandrewsgroup.com.au](mailto:bolon@theandrewsgroup.com.au)
- **Protection** The material, once installed, must be protected from other works which may be in progress, until handover to the client. Appropriate protection includes corflute sheet, and composite fibreboard.
- **Adhesive: Acrylic** Mapei Ultrabond ECO 380, Uzin KE2000S  
PU (2 part) Mapei Adesilex G19  
[www.mapei.com.au](http://www.mapei.com.au)