

Bolon Fact Sheet

Bolon by Jean Nouvel Design

BOLON

Bolon by Jean Nouvel Design

Bolon

Bolon is a textured woven flooring, consisting a profile section PVC warp (vertical weave), with a PVC encased polyester weft (horizontal weave) fixed to a plasticised PVC backing with an interlayer of fibreglass. The Bolon By Jean Nouvel Design collection includes 6 articles and is available in roll and tile form.

Bolon by Jean Nouvel Design



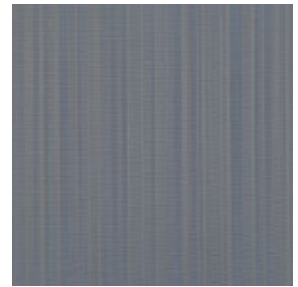
No. 1



No. 2



No. 3



No. 4



No. 5



No. 6

Bolon by Jean Nouvel Design

Design

Bolon By Jean Nouvel Design was created in collaboration with acclaimed architect Jean Nouvel and marks Bolon's first ever architect-driven flooring concept. Conceived with spatiality in mind, the collection directly addresses the concerns of architects in its concept and execution. The sober colour palette consists of grey and black base colours that are subtly enhanced with blue, grey and red weft.

Fast Facts

- Roll
Roll size = 25 m x 2 m at 2.5 mm thick.
Weight of rolls = 2.9 kg/m².
- Tile
Standard tile size = 500 x 500 mm at 3 mm thick.
Weight of tiles = 3.9 kg/m².
Tiles sold by the box = 20 tiles/5 m².

Bolon by Jean Nouvel Design

Technical Specifications

Article Name	Roll	Tile	Wear Class		Wear Rating	Warranty Years	W.O.R. Slip	Pend Test Wet Slip	Sound Reduction	Sound Absorption	Fire Rating NCC C1.10a	
			Roll	Tile								
Bolon By Jean Nouvel Design	No. 1	✓	✓	33	33	EHD	15	R10	P2	12dB	5%	Pass
	No. 2	✓	✗	33	-	EHD	15	R10	P2	12dB	5%	Pass
	No. 3	✓	✗	33	-	EHD	15	R10	P2	12dB	5%	Pass
	No. 4	✓	✗	33	-	EHD	15	R10	P2	12dB	5%	Pass
	No. 5	✓	✗	33	-	EHD	15	R10	P2	12dB	5%	Pass
	No. 6	✓	✓	33	33	EHD	15	R10	P2	12dB	5%	Pass

- Wear Rating** Classified 33 under international standard EN685 rating, the Bolon By Jean Nouvel Design Collection can be used in all areas of commercial and residential applications. Please contact The Andrews Group for specific recommendations on area and colour selection.
- Warranty** The Bolon By Jean Nouvel Design Collection is warranted for 15 years in areas defined as fit for purpose. The terms and conditions of this warranty are available on request.
- Fire Rating** The Bolon By Jean Nouvel Design Collection has a Critical Radiant Flux (CRF) rating of 8 kW/m², and a smoke developed rating of 189 %mins, as tested to ISO9239.1. This allows the product to be installed in any areas of a commercial building under the requirements of the National Construction Code (NCC).

Bolon by Jean Nouvel Design

Technical Specifications

- Slip Rating The Bolon By Jean Nouvel Design Collection is rated R10 under the Wet Oil Ramp test as defined in AS4586. The Bolon By Jean Nouvel Design Collection is rated P2 under the Wet Pendulum Test as defined in AS4586 (2013). These ratings indicate a reduced risk of slip with this product.
- Sound Rating The Bolon By Jean Nouvel Design Collection reduces impact sound by 12 decibels when adhered directly to a concrete slab. The Bolon By Jean Nouvel Design Collection reduces airborne sound by 5% when adhered to a concrete slab. These measurements are defined by ISO 717.1/2, and mean that the product contributes positively to sound insulation in commercial and residential buildings.
- Installation Please refer to Bolon Installation Guidelines or contact the Customer Service Team at The Andrews Group
+61 (03) 9827 1311 | bolon@theandrewsgroup.com.au
- Maintenance Please refer to Bolon Maintenance Guidelines or contact the Customer Service Team at The Andrews Group
+61 (03) 9827 1311 | bolon@theandrewsgroup.com.au