

# Bolon Fact Sheet

Bolon by Missoni

**BOLON**

# Bolon By Missoni

## Bolon

Bolon is a textured woven flooring, consisting a profile section PVC warp (vertical weave), with a PVC encased polyester weft (horizontal weave) fixed to a plasticised PVC backing with an interlayer of fibreglass. The Bolon By Missoni collection includes 13 articles and is available in roll and tile form.

## Design

In its first joint collection, Bolon collaborated with the iconic Italian fashion house to design a brilliantly coloured collection in Missoni's classic and beloved patterns. This flamboyant collection provides visual warmth with Missoni's signature design.

## Fast Facts

- Roll                      Roll size = 25 m x 2 m at 2.5 mm thick.  
Weight of rolls = 2.9 kg/m<sup>2</sup>.
- Tile                        Standard tile size = 500 x 500 mm at 3 mm thick.  
Weight of tiles = 3.9 kg/m<sup>2</sup>.  
Tiles sold by the box = 20 tiles/5 m<sup>2</sup>.

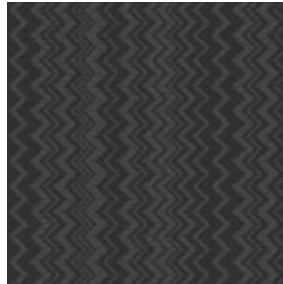
# Bolon By Missoni



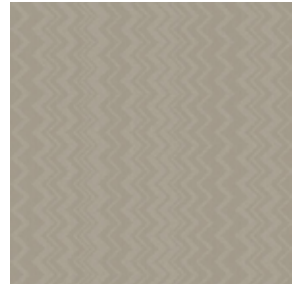
Zigzag Aubergine



Zigzag Cyan



Zigzag Black



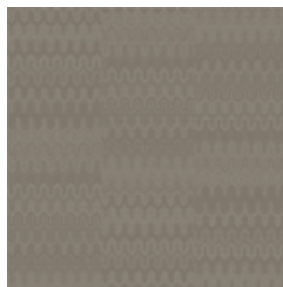
Zigzag Sand



Optical Pineapple



Optical Turquoise



Optical Stone



Flame Patch Green



Flame Patch Pink



Flame Patch Neutral



Flame Black



Flame Rust



Flame Stone

# Bolon By Missoni

## Technical Specifications

Article Name	Roll	Tile	Wear Class		Wear Rating	Warranty Years	W.O.R. Slip	Pend Test Wet Slip	Sound Reduction	Sound Absorption	Fire Rating NCC C1.10a	
			Roll	Tile								
Bolon By Missoni	ZigZag Aubergine	✓	✗	33	-	EHD	15	R10	P2	11dB	5%	Pass
	ZigZag Cyan	✓	✗	33	-	EHD	15	R10	P2	11dB	5%	Pass
	ZigZag Black	✓	✗	33	-	EHD	15	R10	P2	11dB	5%	Pass
	ZigZag Sand	✓	✗	33	-	EHD	15	R10	P2	11dB	5%	Pass
	Optical Pineapple	✓	✗	33	-	EHD	15	R10	P2	11dB	5%	Pass
	Optical Turquoise	✓	✗	33	-	EHD	15	R10	P2	11dB	5%	Pass
	Optical Stone	✓	✗	33	-	EHD	15	R10	P2	11dB	5%	Pass
	Flame Patch Green	✗	✓	-	33	EHD	15	R10	P2	11dB	5%	Pass
	Flame Patch Pink	✗	✓	-	33	EHD	15	R10	P2	11dB	5%	Pass
	Flame Patch Neutral	✗	✓	-	33	EHD	15	R10	P2	11dB	5%	Pass
	Flame Black	✓	✗	33	-	EHD	15	R10	P2	11dB	5%	Pass
	Flame Rust	✓	✗	33	-	EHD	15	R10	P2	11dB	5%	Pass
	Flame Stone	✓	✗	33	-	EHD	15	R10	P2	11dB	5%	Pass

- Wear Rating** Classified 33 under international standard EN685 rating, the Bolon By Missoni Collection can be used in all areas of commercial and residential applications. Please contact The Andrews Group for specific recommendations on area and colour selection.
- Warranty** The Bolon By Missoni Collection is warranted for 15 years in areas defined as fit for purpose. The terms and conditions of this warranty are available on request.
- Fire Rating** The Bolon By Missoni Collection has a Critical Radiant Flux (CRF) rating of 8 kW/m<sup>2</sup>, and a smoke developed rating of 189 %mins, as tested to ISO9239.1. This allows the product to be installed in any areas of a commercial building under the requirements of the National Construction Code (NCC).

# Bolon By Missoni

## Technical Specifications

- **Slip Rating**                      The Bolon By Missoni Collection is rated R10 under the Wet Oil Ramp test as defined in AS4586. The Bolon By Missoni Collection is rated P2 under the Wet Pendulum Test as defined in AS4586 (2013). These ratings indicate a reduced risk of slip with this product.
- **Sound Rating**                      The Bolon By Missoni Collection reduces impact sound by 11 decibels when adhered directly to a concrete slab. The Bolon By Missoni Collection reduces airborne sound by 5% when adhered to a concrete slab. These measurements are defined by ISO 717.1/2, and mean that the product contributes positively to sound insulation in commercial and residential buildings.
- **Installation**                      Please refer to Bolon Installation Guidelines or contact the Customer Service Team at The Andrews Group  
+61 (03) 9827 1311 | [bolon@theandrewsgroup.com.au](mailto:bolon@theandrewsgroup.com.au)
- **Maintenance**                      Please refer to Bolon Maintenance Guidelines or contact the Customer Service Team at The Andrews Group  
+61 (03) 9827 1311 | [bolon@theandrewsgroup.com.au](mailto:bolon@theandrewsgroup.com.au)