

Bolon Fact Sheet

Flow Collection

BOLON

Flow Collection

Bolon

Bolon is a textured woven flooring, consisting a profile section PVC warp (vertical weave), with a PVC encased polyester weft (horizontal weave) fixed to a plasticised PVC backing with an interlayer of fibreglass. The Flow collection includes 7 articles and is available in roll and tile form.

Flow Collection



Alga Silver



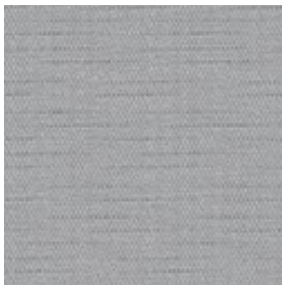
Coral Silver



Shell Silver



Stream Silver



Shore Silver



Pearl Silver



Tide Silver

Flow Collection

Design

Inspired by the mystery of our oceans, the Flow Collection highlights the fluidity and visual motion of the sea in soft, pastel shades. The tranquillity of the Flow Collection lends a natural harmony to any interior environment.

Fast Facts

- Roll Roll size = 25 m x 2 m at 2.5 mm thick.
 Weight of rolls = 2.9 kg/m².
- Tile Standard tile size = 500 x 500 mm at 3 mm thick.
 Weight of tiles = 3.9 kg/m².
 Tiles sold by the box = 20 tiles/5 m².
- Studio Available in Bolon Studio shapes.
 Visit bolon.theandrewsgroup.com.au or contact The Andrews Group for details.

Flow Collection

Technical Specifications

Article Name	Roll	Tile	Wear Class		Wear Rating	Warranty Years	W.O.R. Slip	Pend Test Wet Slip	Sound Reduction	Sound Absorption	Fire Rating NCC C1.10a
			Roll	Tile							
Flow Stream Silver	✓	✓	32	32	HD	10	R10	P3	12dB	5%	Pass
Coral Silver	✓	✓	32	32	HD	10	R10	P3	12dB	5%	Pass
Shell Silver	✓	✓	32	32	HD	10	R10	P3	12dB	5%	Pass
Alga Silver	✓	✓	32	32	HD	10	R10	P3	12dB	5%	Pass
Shore Silver	✓	✓	32	32	HD	10	R10	P3	12dB	5%	Pass
Pearl Silver	✓	✓	32	32	HD	10	R10	P3	12dB	5%	Pass
Tide Silver	✓	✓	32	32	HD	10	R10	P3	12dB	5%	Pass

- Wear Rating**

Classified 32 under international standard EN685 rating, the Flow Collection can be used in all areas of commercial and residential applications. Please contact The Andrews Group for specific recommendations on area and colour selection.
- Warranty**

The Flow Collection is warranted for 10 years in areas defined as fit for purpose. The terms and conditions of this warranty are available on request.
- Fire Rating**

The Flow Collection has a Critical Radiant Flux (CRF) rating of 7.4 kW/m², and a smoke developed rating of 189 %mins, as tested to ISO9239.1. This allows the product to be installed in any areas of a commercial building under the requirements of the National Construction Code (NCC).

Flow Collection

Technical Specifications

- Slip Rating The Flow Collection is rated R10 under the Wet Oil Ramp test as defined in AS4586. The Flow Collection is rated P3 under the Wet Pendulum Test as defined in AS4586. These ratings indicate a reduced risk of slip with this product.
- Sound Rating The Flow Collection reduces impact sound by 12 decibels when adhered directly to a concrete slab. The Flow Collection reduces airborne sound by 5% when adhered to a concrete slab.
- Installation Please refer to Bolon Installation Guidelines or contact the Customer Service Team at The Andrews Group
+61 (03) 9827 1311 | bolon@theandrewsgroup.com.au
- Maintenance Please refer to Bolon Maintenance Guidelines or contact the Customer Service Team at The Andrews Group
+61 (03) 9827 1311 | bolon@theandrewsgroup.com.au