

Bolon Fact Sheet

Graphic Collection

BOLON

Graphic Collection

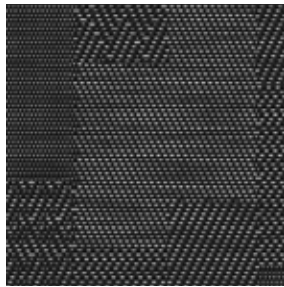
Bolon

Bolon is a textured woven flooring, consisting a profile section PVC warp (vertical weave), with a PVC encased polyester weft (horizontal weave) fixed to a plasticised PVC backing with an interlayer of fibreglass. The Graphic collection includes 11 articles and is available in roll, tile and plank form.

Graphic Collection



Etch



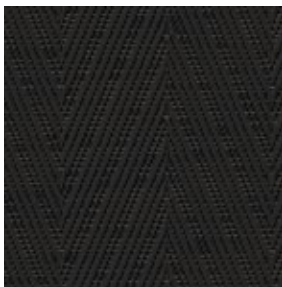
Checked



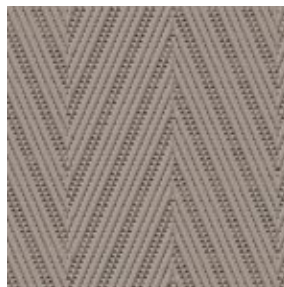
String



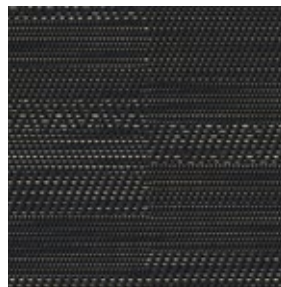
Mache



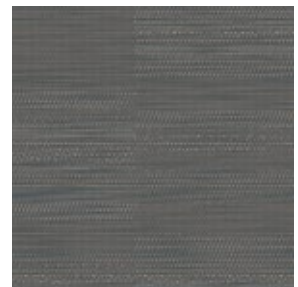
Herringbone Black



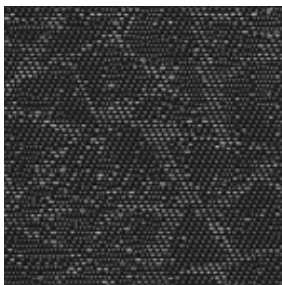
Herringbone Beige



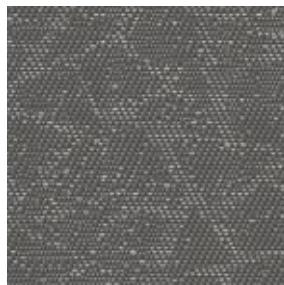
Gradient Black



Gradient Grey



Texture Black



Texture Grey



Texture Beige

Graphic Collection

Design

The Graphic Collection is inspired by modern architecture and the grandiose structures of glass and steel. Suitable for high-traffic environments, the Graphic Collection creates a harmony of contemporary style with classic, sober ambience.

Fast Facts

- Roll Roll size = 25 m x 2 m at 2.5 mm thick.
 Weight of rolls = 2.9 kg/m².
- Tile Standard tile size = 500 x 500 mm at 3 mm thick.
 Weight of tiles = 3.9 kg/m².
 Tiles sold by the box = 20 tiles/5 m².
- Plank Standard plank size = 667 x 222 mm at 3 mm thick.
 Weight of planks 3.9 kg/m².
 Sold by the box in either portrait or landscape weave 27 planks/4 m².
- Studio The Graphic Collection cannot be provided as Bolon Studio.

Graphic Collection

Technical Specifications

Article Name	Roll	Tile	Plank	Wear Class	Wear Rating	Warranty Years	W.O.R. Slip	Pend Test Wet Slip	Sound Reduction	Sound Absorption	Fire Rating NCC C1.10a
Graphic Etched	✓	✓	✓	33	EHD	15	R10	P2	12dB	5%	Pass
Graphic Checked	✓	✗	✗	33	EHD	15	R10	P2	12dB	5%	Pass
Graphic String	✓	✓	✓	33	EHD	15	R10	P2	12dB	5%	Pass
Graphic Mache	✓	✓	✓	33	EHD	15	R10	P2	12dB	5%	Pass
Graphic Herring-bone Black	✓	✗	✗	33	EHD	15	R10	P2	12dB	5%	Pass
Graphic Herring-bone Beige	✓	✗	✗	33	EHD	15	R10	P2	12dB	5%	Pass
Graphic Gradient Black	✓	✗	✗	33	EHD	15	R10	P2	12dB	5%	Pass
Graphic Gradient Grey	✓	✗	✗	33	EHD	15	R10	P2	12dB	5%	Pass
Graphic Texture Black	✗	✓	✗	33	EHD	15	R10	P2	12dB	5%	Pass
Graphic Texture Grey	✗	✓	✗	33	EHD	15	R10	P2	12dB	5%	Pass
Graphic Texture Beige	✗	✓	✗	33	EHD	15	R10	P2	12dB	5%	Pass

- Wear Rating** Classified 33 under international standard EN685 rating, the Graphic Collection can be used in all areas of commercial and residential applications. Please contact The Andrews Group for specific recommendations on area and colour selection.
- Warranty** The Graphic Collection is warranted for 15 years in areas defined as fit for purpose. The terms and conditions of this warranty are available on request.
- Fire Rating** The Graphic Collection has a Critical Radiant Flux (CRF) rating of 8.0 kW/m², and a smoke developed rating of 189 %mins, as tested to ISO9239.1. This allows the product to be installed in any areas of a commercial building under the requirements of the National Construction Code (NCC).

Graphic Collection

Technical Specifications

- Slip Rating The Graphic Collection is rated R10 under the Wet Oil Ramp test as defined in AS4586. The Graphic Collection is rated P2 under the Wet Pendulum Test as defined in S4586. These ratings indicate a reduced risk of slip with this product.
- Sound Rating The Graphic Collection reduces impact sound by 12 decibels when adhered directly to a concrete slab. The Graphic Collection reduces airborne sound by 5% when adhered to a concrete slab. These measurements are defined by ISO717.1/2, and mean that the product contributes positively to sound insulation in commercial and residential buildings.
- Installation Please refer to Bolon Installation Guidelines or contact the Customer Service Team at The Andrews Group
+61 (03) 9827 1311 | bolon@theandrewsgroup.com.au
- Maintenance Please refer to Bolon Maintenance Guidelines or contact the Customer Service Team at The Andrews Group
+61 (03) 9827 1311 | bolon@theandrewsgroup.com.au