

# Education

The Future Of Textile Flooring

**BOLON**







# Contents

03	Company Overview
06	Product Overview
08	Performance Benefits
11	Education Portfolio
13	Classrooms & Lecture Theatres
17	Office & Meeting Rooms
21	Corridors
25	Reception Areas
29	Break-Out Spaces
33	Gymnasiums
35	Libraries
37	Dining Spaces
41	Stairs
44	Bolon Green
45	Care and Maintenance

# The Story of Bolon

## The Company

Bolon (est. 1949) - A third-generation family-owned Swedish design company and the creator of woven vinyl flooring. Bolon products are trend-setting with distinct focus on innovation, quality and sustainability. The designs deliver the beauty of a woven textile with the benefits of resilient flooring – long life cycles and ease of installation and maintenance. The Bolon portfolio encompasses an infinite range of design possibilities, suitable for all commercial applications, including indoor and controlled outdoor flooring, wall-coverings and area rugs. Head-quartered and manufactured in Ulricehamn, a town in the heart of Sweden's textile region, Bolon continues to be the world's leader in woven vinyl textiles and is globally represented and distributed through sales partnerships that ensure consistent and reliable product deliveries. Bolon is exclusively represented in Australia and Southeast Asia by The Andrews Group.

## The History

Over 60 years ago in Sweden, an idea was born to turn textile waste into rag rugs and the Bolon story began. Bolon's initial product was revolutionary at the time, and it characterised a desire to lead rather than to follow. The man who lit the spark was Nils-Erik Eklund, the founder of Bolon. Today, his granddaughters, Annica and Marie, continue to carry the torch. Since they took over the company from their parents in 2003, they have been on a mission to make Bolon a design-led innovator and fuse the once conservative flooring company with the limitless creativity found in fashion, art, architecture and interior design. View the full story at [bolon.theandrewsgroup.com.au](https://bolon.theandrewsgroup.com.au).

bo/lon

a combination of the first and last letters of the Swedish words for cotton (bomull) and nylon.







Bolon Weavery: Top Layer, Weave

# Product Overview

Durable and easy to maintain, Bolon is a smart flooring solution that can be used in diverse environments with complete confidence.

## Product Structure

Bolon material is comprised of four layers, fused together through a heating process.

### 1. Top Layer, Weave

A set of vinyl threads (warp and weft) that are woven together and characterised as profiled, elliptical or folded.

### 2. Upper Layer, Backing

Fire-protective backing (Bfl-s1 Classification).

### 3. Middle Layer, Backing

Glass fibre layer for dimension and stability.

### 4. Bottom Layer, Backing

Adjustable for rolls, tiles or acoustic needs.  
This layer is comprised of up to 33% recycled content.

## 100% Made In Sweden | 100% Quality

All design, production and distribution activities are based at the Bolon factory in Ulricehamn. This strategy of centralisation allows Bolon to ensure expertise across the entire value chain, while encouraging flexibility and innovation.

Designs deliver the beauty of a woven textile with all the benefits of resilient flooring – long life cycles and ease of installation and maintenance.

As an international design brand, boasting collaborations with world-renowned architects and designers, Bolon is always at the forefront.





Bolon Botanic Osier, Botanic Cilia, Botanic Ivy,  
Now Anthracite and Now Silver



# Bolon Benefits

The performance behind the aesthetic.



## Resilient

Bolon offers the highest durability ratings for textile products. The European standard 685 has classified Bolon products as 32 and 33, suitable for heavy commercial traffic.



## Quality product & service

All Bolon collections are developed, designed and manufactured in Sweden, without any exceptions. This allows Bolon to control every step of the process, with a focus on quality and detail.



## Hygienic & Hypo-allergenic

Bolon yarn is innately resistant to microbial invasion and with very low VOC emissions, the collection contributes positively to indoor air quality.



## Water resistant

Bolon is impervious to liquid, resulting in a waterproof and rot-resistant product.



## Slip-resistant

The woven structure of Bolon flooring is slip resistant, making it appropriate for public areas exposed to heavy foot traffic.



## Easy to maintain

Boasting simple care and maintenance routines requiring no harmful chemicals, Bolon is an easy to maintain flooring solution. In addition, the compact yarn results in fewer places for dirt and debris to hide.



## Indoor / Outdoor

Suitable for both indoor and controlled outdoor use, Bolon maintains its structure when exposed to everyday wear.



## Sustainable

Celebrated for its excellence and visionary thinking in relation to sustainability and in accordance with the strictest environmental standards, Bolon uses only the highest quality raw material in its production and without phthalates. In addition, the simple care and maintenance routines require no harmful chemicals and the extensive product life minimises waste and environmental impact.



## Comfort

Bolon provides comfort underfoot and has antistatic properties to protect against unpleasant shocks.



## Superior Technical Qualities

Superior technical qualities including up to 15-year warranty and suitable for heavy commercial traffic.

# A Smarter Alternative

The comfort of textile flooring with the cleanability, hygiene and durability of resilient flooring.

Benefits	Bolon	Carpet	Resilient Vinyl, Lino, Rubber
Appearance retention over time	✓	✗	✓
Life expectancy 20+ years	✓	✗	✓
Textile appearance	✓	✓	✗
Easy maintenance	✓	✗	✗
Resistance to staining	✓	✗	✓
Drying time	✓	✗	✓
Comfort underfoot	✓	✓	✗
Sound absorption (iso 140-8)	✓	✓	✓
Sound reduction	✓	✓	✗
Slip resistance	✓	✓	✓
Impervious material	✓	✗	✓
Antistatic (iso 1815)	✓	✗	✓
Low allergy	✓	✗	✓
Ease of rolling loads	✓	✗	✓
Resistance to microbial growth	✓	✗	✓
Warmth underfoot	✓	✓	✗





Bolon Now Anthracite

# Bolon Education

Functional by nature, versatile by design.

## Low Maintenance

Education facilities are busy places and require continual care and upkeep to ensure they remain clean and hygienic. Bolon features a compact yarn and weaving structure with no exposed fibres, resulting in fewer places for dirt and debris to hide.

Additionally, Bolon can be cared for with a vacuum, mop and eco-friendly, neutral cleaning agents. Resilient enough for almost any spill or mess, Bolon flooring is easy to clean and simple to maintain.

## Durability

Flooring for Education environments must be able to withstand heavy foot traffic and everyday wear and tear. Bolon is both durable and resilient. Bolon products have been classified with durability ratings of 32 and 33 - suitable for heavy commercial traffic. Bolon offers a 10 to 15 year warranty on its material when maintained according to Bolon Care+ guidelines. The composition of the flooring also allows for trolleys and wheelchairs to pass easily.

## Design Versatility

Bolon collections includes over 100 articles, available in a variety of textures, colours, patterns and formats, including both rolls and tiles. In addition to the limitless aesthetic options offered in the standard product line, Bolon offers designer collections and bespoke programs, designed to meet specific project and application demands.

## Commercial Portfolio

Our portfolio includes projects in the following areas, among others, in Education spaces:

- Classroom and Lecture Theatres
- Office and Meeting Rooms
- Corridors
- Reception Areas
- Break-Out Spaces
- Gymnasiums
- Libraries
- Dining Spaces
- Stairs





Bolon Botanic Cilia and Botanic Tilia

A man in a light-colored shirt and dark trousers stands next to a large, curved projection screen in a lecture theatre. The screen displays a complex, glowing, geometric structure, possibly a molecular model or a network diagram. The room has a dark ceiling with a large, oval-shaped light fixture. The background features large windows covered with sheer curtains. The overall atmosphere is modern and professional.

# Classrooms & Lecture Theatres





Bolon Now Anthracite



Bolon Now Anthracite





A photograph of a modern office or meeting room. In the foreground, two black mesh office chairs with chrome bases and casters are positioned. In the background, a long white table is set with several water bottles and more chairs. The room has large windows, creating a bright and professional atmosphere.

# Office & Meeting Rooms





Bolon Now Anthracite





Bolon Studio™ Wing: BKB Sisal Plain Granite, Now Silver, Create Efficio, Create Como and Create Pario





A photograph of a modern, brightly lit hallway. The walls are white with large, bold yellow geometric shapes (triangles and polygons) painted on them. The floor is covered in a yellow carpet with a repeating geometric pattern. On the left, there are several white doors with silver handles. Above one door is a small white sign with the letter 'D'. The ceiling is white with a complex, geometric, honeycomb-like structure. At the end of the hallway, there is a large window with a black frame, looking out onto green trees. A glass railing is visible in the distance.

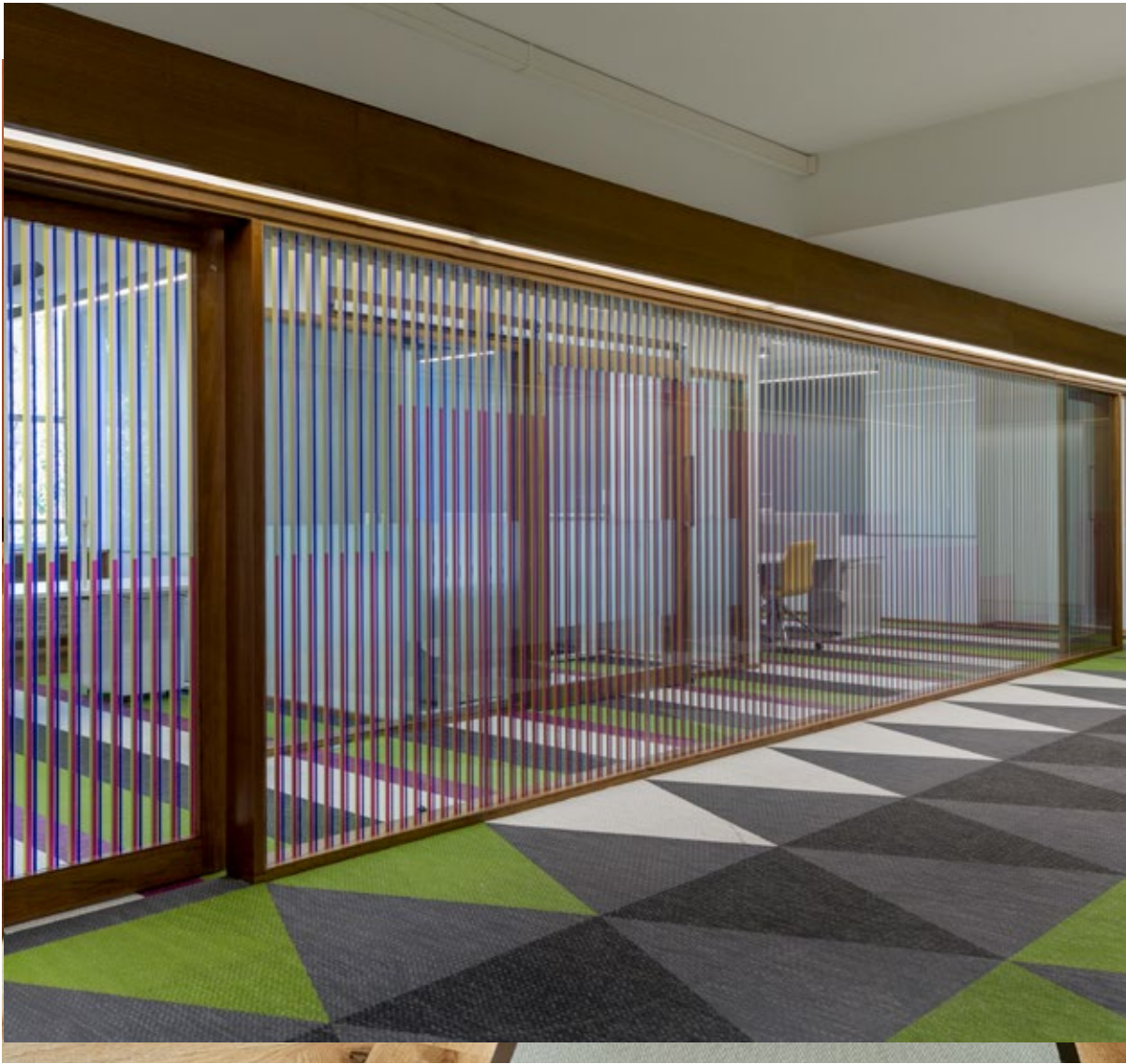
# Corridors





Bolon Botanic Viva and Botanic Osier





Bolon Studio™ Triangles: Artisan Ivory, Artisan Malachite, Artisan Slate and Artisan Coal





## High Use and Pickups

Masters Research Reports  
Reference and Journals



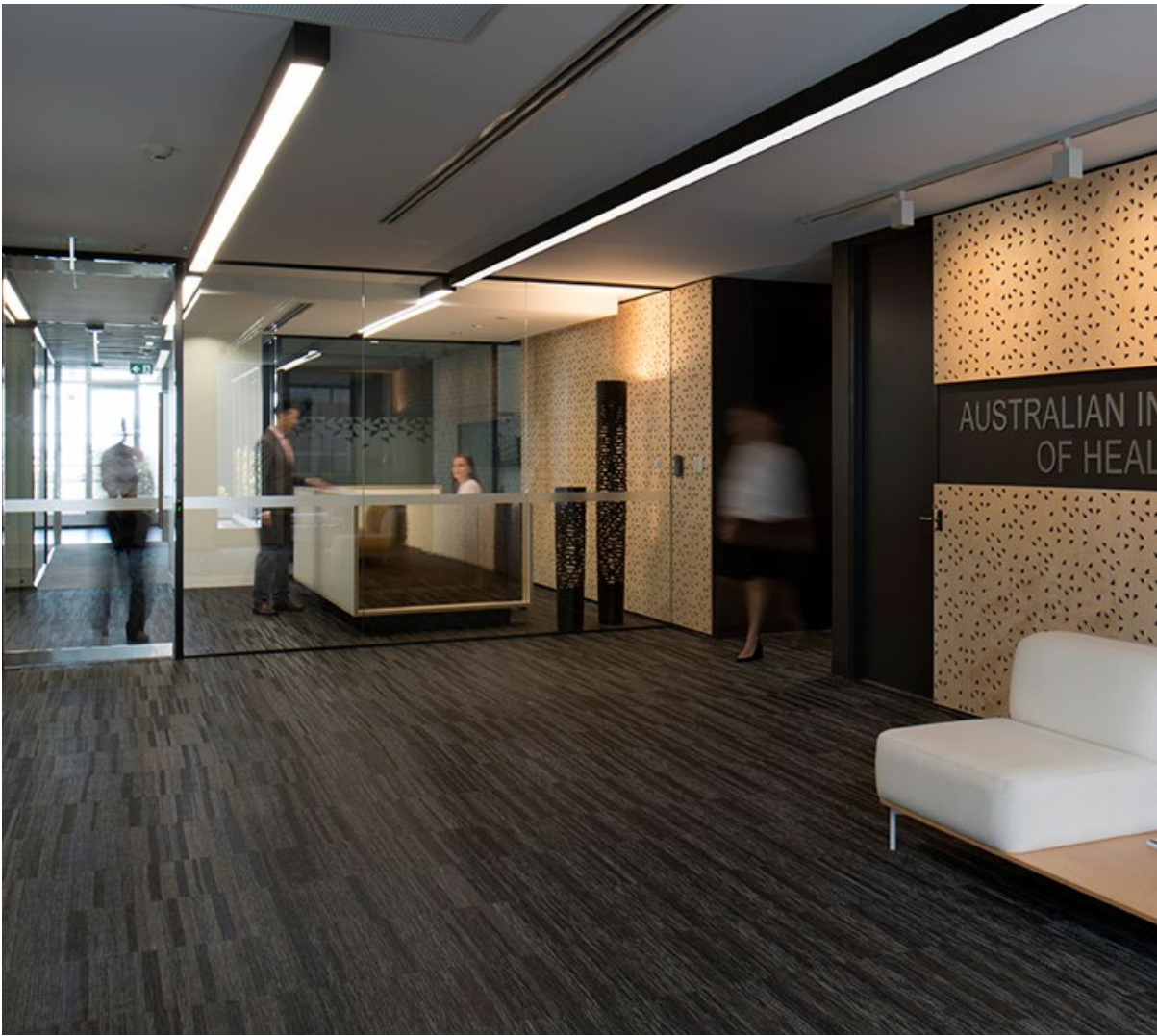


# Reception Areas





Bolon Studio™ Wing: Artisan Ivory, Botanic Osier and Botanic Picea



Bolon Graphic Gradient Black





Bolon Studio™ Triangle; Botanic Ivy, Botanic Osier,  
Now Silver and Now Anthracite





# Break-out Spaces



Bolon Studio™ Wing: Botanic Viva, Botanic Osier,  
Botanic Cilia, Now Silver and Now Anthracite





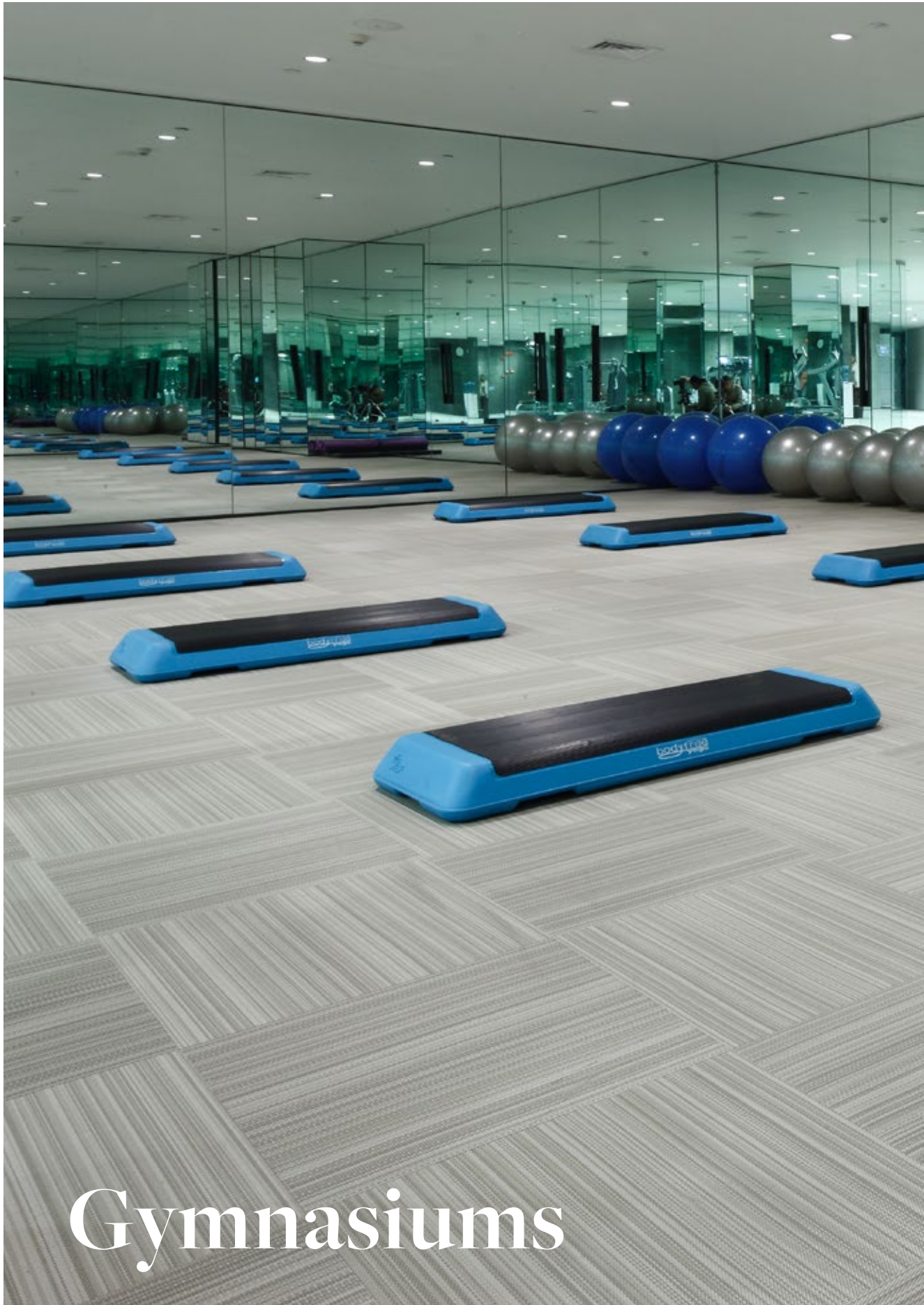
Bolon Botanic Ivy, Botanic Cilia, Botanic Tilia,  
Botanic Picea and Botanic Osier





Bolon Custom Shapes: Artisan Malachite,  
Artisan Coal and Artisan Slate





# Gymnasiums



Bolon Graphic New York





# Libraries







# Dining Spaces







Bolon Studio™ Rectangle: BKB Sisal Plain Beige, BKB Sisal Plain Mole, Artisan Slate, Artisan Coal, Artisan Malachite, Botanic Osier and Graphic String



Bolon By You Stripe Black Blueberry Blue



# Stairs







Bolon Flow Shell





Bolon Recycling Plant

# Bolon Green<sup>®</sup>

Bolon adopts a holistic approach to environmental responsibilities and a journey of innovation that starts long before flooring is produced and long after it has fulfilled its intended purpose.

## 0% Waste

Bolon manufacturing produces 0% waste. Pre-consumer waste generated by suppliers is also fed into Bolon's on-site recycling plant (\$17 million investment).

## 33% Recycled

All Bolon collections contain up to 33%. By 2020, this figure will rise to 50%.

## 100% Committed

With sustainability at the core of everything they do, Bolon is 100% committed to improvements across all parts of the business.

## Choose Green

- ✓ **Modern Best Practice PVC**  
derived from natural resources (salt and oil) and free of harmful chemicals (phthalates and heavy metals).
- ✓ **Environmental Certificates**  
the world's most stringent certificates.
- ✓ **Cradle to Cradle**  
a continual process including the auditing of raw material suppliers and healthy installation alternatives like NoGlue<sup>®</sup> and Bolon Green Weld that has no negative impact on the environment and can be recycled and reused over and over again.
- ✓ **10 or 15 Year Warranty**  
and 32 or 33 durability classification.
- ✓ **Easy to Clean Without Chemicals**  
meaning less damaging for our water supply.
- ✓ **Made and Recycled in Sweden**  
with people, animals and the plant in mind. Production uses 100% renewable energy.

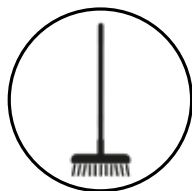
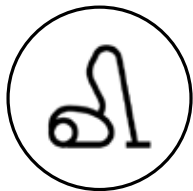
Bolon product and process certifications include:  
Green Building Council Australia Best Practice PVC, Floorscore, BREEAM, Environmental Product Declaration (EPD), Green Tag, M1, Basta, Portico and more.

Learn more about [Bolon's sustainability and recycling approach](#).



# Bolon Care+

Follow our simple instructions to maintain a clean floor.



Bolon floor coverings are water resistant, can be scrubbed and cleaned using wet methods. For a general clean:

- **Vacuum** area.
- **Spot clean** with a scrubbing brush (or Scrubber-Dryer machine with soft brush rollers) and warm water.
- **Dry** wet areas If required, with a soft or microfibre cloth.

## Spot Cleaning

- For dry spills, use a vacuum or brush and pan to clean the spill.
- For spot removal, use a scrubbing brush, warm water and a minimal dose of all-purpose cleaner with a PH of 7-8.5. Scrubber-Drying machines can also be used if preferred.
- Dry wet areas with a soft or microfibre cloth.

## Stain Removal

- Treat the stain as soon as possible for best results. Most stains can be removed with a brush and water.
- If using a stain remover, ensure it is safe to use on vinyl flooring.

## Removal of Challenging Stains

Stain	Advice
Chocolate, fat, juice, coffee, beer, wine	Hot water with strong cleaner
Asphalt, oil, shoe cream, chalk, ink	Chemically pure petrol
Blood	Cold water and ammonia (if needed)
Rust	Light acidic (PH 3-4) cleaner
Water-based glue	Hot water
Solvent-based glue	Chemically pure petrol
Marks from shoes	Rub with dry cloth
Chewing gum	Hot steam or freeze spray



### **Machine - Wet Vac Scrubber-Dryer Method**

The use of the Wet Vac Scrubber-Dryer Method will depend on the size of the project, level of traffic, likelihood of spills and colour choice.

- Vacuum relevant area.
- Use a Scrubber-Dryer machine with soft brush roller, warm water and a minimal dose of all-purpose cleaner with a PH of 7-8.5 (to avoid the need to rinse the floor). If possible, clean along the longitudinal weave direction.

### **Restoration Clean**

A poorly maintained or extremely dirty floor can typically be restored to a near new condition.

- Vacuum relevant area.
- Remove difficult stains. See REMOVAL OF CHALLENGING STAINS.
- Use a Scrubber-Dryer machine with soft brush rollers, warm water and a strong, alkaline all-purpose cleaner with a PH of 9-11. Wet the floor by running the machine with the recommended cleaning solution (do not use the suction function). If possible, clean the floor along the longitudinal weave direction.
- Leave for 5-10 minutes, without allowing it to dry.
- Rinse twice with clean water using the Scrubber-Dryer machine or until the floor no longer lathers.

\* Contact Customer Service at The Andrews Group for assistance and advice.

+61 (03) 9827 1311 | [bolon@theandrewsgroup.com.au](mailto:bolon@theandrewsgroup.com.au)





# BOLON

---

THE ANDREWS GROUP

[bolon.theandrewsgroup.com.au](http://bolon.theandrewsgroup.com.au)

[bolon@theandrewsgroup.com.au](mailto:bolon@theandrewsgroup.com.au)